



LIP SUNGLASSES



LIP SUNGLASSES

An aerial photograph of a large, curling ocean wave. The water is a vibrant turquoise color, and the wave's crest is curling over, creating a thick, white lip of foam. The background shows a vast expanse of blue ocean under a bright sky. The text 'LiP of the wave' is overlaid on the bottom center of the image.

LiP of the wave



ABOUT LiP

LiP Sunglasses comprises a multi-national team of watersports enthusiasts who have turned their passion into their profession. The product development and design team draw on vast experience in the eyewear industry and our team of international riders and sailors put our products through intensive testing, ensuring that they fulfil the purpose for which they were designed.

Protecting your eyes from the sun's glare, wind, and ocean spray is not just about letting you ride better, longer, and harder. LiP is committed to bringing sunglasses of the highest quality and functionality to style-conscious watermen and women and outdoor enthusiasts everywhere.

We have set out to become a leading eyewear brand for those pursuing their outdoor dream, exposed to the elements, on water, in the air and on land. Our watershades are setting new standards and are changing the way people think.

Quality, Function, and Style. Take the flip - to LiP!



LIP

Watershades



TYPHOON

THE ULTIMATE WATERSHADE



0903 CLX / 0927 UP
black / gun blue



0880 CLX / 0897 UP
white / gun blue



1153 CLX / 1160 UP
silver / gun blue



1375 CLX / 1382 UP
green / smoke



1603 CLX
white-red / smoke



1443 CLX / 1450 UP
black / smoke



1467 CLX / 1474 UP
white / smoke



1481 CLX / 1498 UP
silver / smoke



0170 CLX / 0194 UP
grey / smoke



1610 CLX
black-pink / smoke



0910 CLX / 0934 UP
black / brown



0026 CLX / 0040 UP
white / brown



1047 CLX / 1054 UP
silver / brown



1061 CLX / 1078 UP
matt black / smoke



1627 CLX
black-pink / brown

ADJUSTABLE
CORD
LOCK

CLIP-ON
SAFETY
LEASH

TR90 FLEXIBLE
LIGHTWEIGHT
FRAME

DOUBLE-
VORTEX VENT
SYSTEM

SHOCK-
ABSORBING
TPU RUBBER

ZEISS
PC POLARIZED
8 BASE LENSES



SILICONE
RETAINER
NECKLACE

HYDROPHOBIC &
OLEOPHOBIC
TRI-PEL COATING

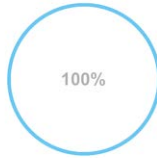
LENSES BY



PROTECTION

Sunglasses are not just fashion accessories – they also protect your eyes from the sun's harmful radiation. The damage UV rays cause accumulates over a lifetime and can lead to irreversible consequences. High quality sunglasses offer optimal protection, eliminating those risks. Like sunscreen, they should be worn as soon as you are outside, even on hazy days as clouds do not block UV rays.

UV PROTECTION



UVA, UVB, UVC, HEV (High Energy Visible Light)

LENS QUALITY

The lenses are the heart of any sunglasses and here we make no compromises, cooperating only with the best manufacturers. All of our lenses are developed and produced under rigorous quality control and applied with a variety of special performance coatings in order to enhance visibility, repel water & dirt, and increase scratch resistance and durability. Mirror finishes available include Standard, Gradient, Flash and Multi-layer, creating a variety of effects and a stylish look.

All LiP sunglasses comply with the following standards:

- European Standard EN ISO 12312-1:2013
- American National Standard ANSI Z80.3-2015
- Australian/New Zealand Standard AS/NZS 1067:2003
- ANSI Z87.1-2003 (High Mass Impact Test)



TYPHOON and ZEISS

Our 2016 TYPHOON is fitted with de-centered injected polycarbonate (PC) polarized lenses by ZEISS, featuring a hydrophobic and oleophobic coating, high impact resistance, superior scratch resistance and elimination of glare for improved vision especially on water and snow.

LENSES BY



HYDROPHOBIC TRI-PEL COATING

Created for watersports and used in the TYPHOON, this unique production process from Carl Zeiss Vision combines the outstanding, easy to clean, oil and water repellent features of the Ri-Pel coating, together with the technical performance of the Tri-Flection patented mirror series. This compound surface also offers an exceptionally long-lasting anti-smudge mirror treatment, superior to standard lenses which are often characterized by fragility and tendency to dirt marks.



POLARIZATION

Polarized lenses strongly reduce glare by filtering out the reflected sunlight that bounces off horizontal surfaces like water or roads. While regular sunglasses only reduce the amount of light reaching the eye, polarized lenses will provide enhanced vision for unmatched clarity and comfort, especially when used on water.



SURGE

THE ESSENTIAL WATERSHADE

HYDROPHOBIC
PC POLARIZED
8 BASE LENSES

DOUBLE-
VORTEX VENT
SYSTEM

TR90 FRAME &
SHOCK ABSORBING
TPU RUBBER

CLIP-ON LEASH &
RETAINER
NECKLACE



Packing all functional features of the TYPHOON into a stylish and affordable package, the SURGE represents the essence of what a quality water shade needs to be, to really work, in everyday and extreme conditions.



1504
gloss black / smoke



1511
gloss black / brown



1528
transparent grey / smoke



1535
graphite-green / smoke



1559
graphite-red / smoke

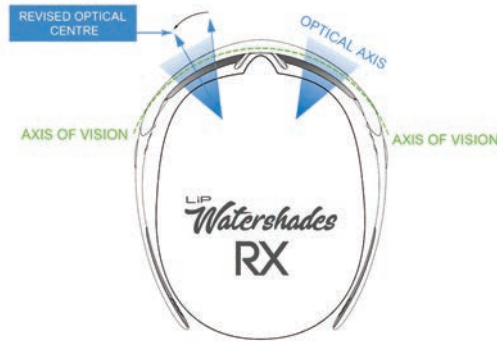


1566
graphite-blue / smoke

PRESCRIPTION WATERSHADES

Configured specifically for sports use, with a revised optical centre to improve peripheral vision and overall balance, our Watershades RX service brings a unique, scientifically-advanced category of lens material to the watersports market. With a high Abbe value of 45, 'Trivex' delivers the following key benefits:

- Ultra lightweight and thin lens material
- Crisp & clear vision with optimal peripheral clarity
- High Impact resistance and superior strength



Our RX service includes both single vision & varifocal lenses for the Surge & Typhoon.

All Watershades RX come equipped with the following standard coatings:

- Anti-scratch
- Anti-reflective
- Hydrophobic
- Oleophobic

SINGLE VISION LENSES

For nearsightedness, farsightedness and astigmatism, our single vision lenses are the standard option for customers who want to leave their contact lenses at home. Our RX single vision lenses can accommodate sphere readings of up to +9/-9. Options include fixed tint, photochromic, polarized or photochromic and polarized lenses.

VARIFOCAL LENSES

Our varifocal lenses are for customers that require two prescriptions in their lenses – one for distance and one for reading. The most obvious scenario where varifocals are required are when sailors need to consult chart tables and instruments while also needing to be able to see in the distance.

LENS OPTIONS

We offer four types of lenses for our prescription watershades to cater for a variety of lighting conditions and user requirements: Fixed Tint, Polarized, Photochromic, Polarized & Photochromic.

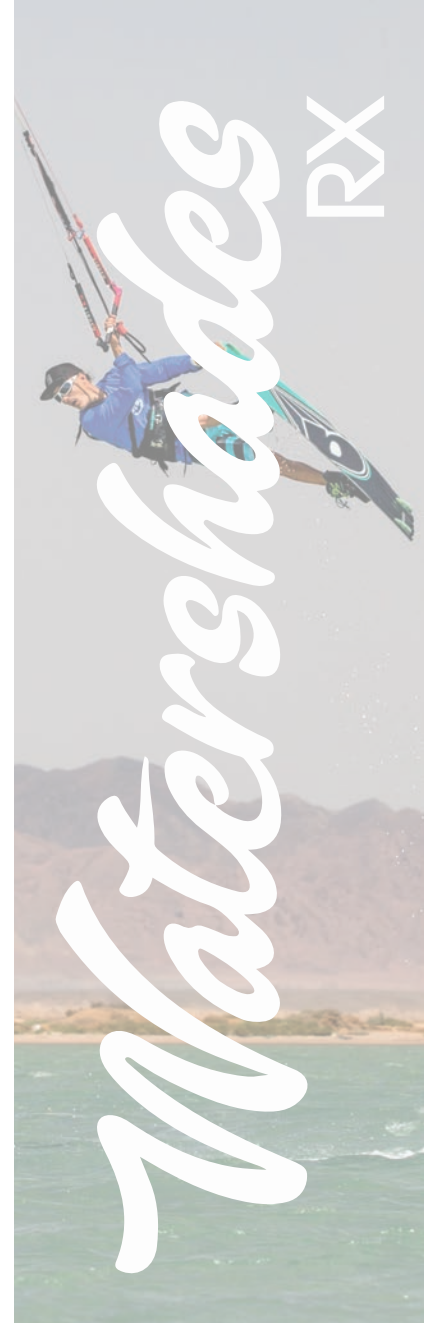
FIXED TINT & POLARIZED LENSES



MIRROR COATINGS



PHOTOCHROMIC LENSES





LIP URBAN

JAZZ



BRING OUT THE TUNE IN YOU!

unisex design

- . TR-90 injected frame
- . POLARIZED / MULTILAYER lenses by Carl Zeiss Vision
- . Lens material: polycarbonate and CR-39
- . 100% UV protection
- . Japanese stainless steel hinge screws
- . 6 base curve radius lenses
- . hardcase / EVA case & microfiber cleaning bag





gloss black
smoke lens / green mirror
1337



gloss turtle-matt black
smoke lens / silver mirror
1344



grey turtle-matt black
brown lens / orange mirror
1320



gloss black
smoke lens
1399



gloss red-gloss black
smoke lens / silver mirror
1313

VELO



THAT'S HOW WE ROLL

unisex design

- . TR-90 injected frame
- . MULTILAYER lenses by Carl Zeiss Vision
- . Lens material: polycarbonate and CR-39
- . 100% UV protection
- . Japanese stainless steel hinge screws
- . 6 base curve radius lenses
- . hardcase / EVA case & microfiber cleaning bag





matt black
smoke lens / rose gold mirror
1290



grey turtle-matt black
smoke lens / blue mirror
1283



transparent yellow-matt black
purple lens / green mirror
1269



transparent yellow-matt black
gradient purple lens
1276

FREAK



ALL IS NORMAL UNTIL YOU DISCOVER WHAT'S LURKING BENEATH

unisex design

- . TR-90 injected frame
- . POLARIZED / MULTILAYER lenses by 3PLY & Carl Zeiss Vision
- . Lens material: polycarbonate and CR-39
- . 100% UV protection
- . Japanese stainless steel hinge screws
- . 6 base curve radius lenses
- . hardcase / EVA case & microfiber cleaning bag





gloss black-white stripe
gradient smoke lens
1238



gloss white-red stripe
night blue gradient lens
0392



gloss black-white stripe
smoke lens / rose gold mirror
1245



matt black-turtle
brown lens / flash gold mirror
0385



matt black-orange
smoke lens / silver mirror
0361

TWIST



WHEN EDGE BECOMES SMOOTH AND SMOOTH BECOMES EDGE

unisex design

- . TR-90 injected frame
- . POLARIZED / MULTILAYER lenses by 3PLY & Carl Zeiss Vision
- . Lens material: polycarbonate and CR-39
- . 100% UV protection
- . Japanese stainless steel hinge screws
- . 6 base curve radius lenses
- . hardcase / EVA case & microfiber cleaning bag





gloss black
lover soul gradient lens
0415



matt red-gloss black
gradient smoke lens
1252



matt black-gloss grey
brown lens / orange mirror
1139



gloss black gradient
smoke lens / rose gold mirror
1122



gloss black
brown lens / gold mirror
0446

ROSE



ELEGANT PERFECTION - WITHOUT THE THORNS

female design

- TR-90 injected frame
- CR-39 POLARIZED lenses by Carl Zeiss Vision
- 100% UV protection
- Japanese stainless steel hinge screws
- 6 base curve radius lenses
- hardcase & microfiber cleaning bag





grey turtle-gloss black
gradient smoke purple lens
1191



gloss black-turtle
gradient purple lens
0309



gloss white
gradient smoke lens
0316



turtle-gloss black
gradient smoke lens
0323

ROCK



DARE TO ROCK YOUR STYLE

unisex design

- . TR-90 injected frame
- . POLARIZED / MULTILAYER lenses by 3PLY & Carl Zeiss Vision
- . Lens material: polycarbonate and CR-39
- . 100% UV protection
- . Japanese stainless steel hinge screws
- . 6 base curve radius lenses
- . hardcase / EVA case & microfiber cleaning bag





grey turtle-matt black
gradient smoke lens
1351



gloss black-red
smoke lens / silver mirror
0453



matt black-gloss grey
smoke lens / rose gold mirror
1146



grey turtle-matt black
brown lens / orange mirror
1368



gloss white
smoke lens / blue mirror
0484



matt grey
smoke lens
0477

MOBE



POISE AND BALANCE: SOPHISTICATED SIMPLICITY

unisex design

- . TR-90 injected frame
- . MULTILAYER lenses by Carl Zeiss Vision
- . Lens material: polycarbonate and CR-39
- . 100% UV protection
- . Japanese stainless steel hinge screws
- . 6 base curve radius lenses
- . hardcase / EVA case & microfiber cleaning bag





gloss grey-orange
gradient smoke lens
1207



matt transparent blue
gradient smoke lens
1221



dark transparent grey
smoke lens / blue mirror
1108



dark transparent grey
brown lens / gold mirror
1092

CLOUD9



INSPIRED BY THE LEGENDARY SURF BREAK

unisex design

- . TR-90 injected frame
- . POLARIZED / MULTILAYER lenses by 3PLY & Carl Zeiss Vision
- . Lens material: polycarbonate
- . 100% UV protection
- . Japanese stainless steel hinge screws
- . 8 base curve radius lenses
- . EVA case & microfiber cleaning bag





matt black-red stripe
brown lens / orange mirror
1085



gloss black
smoke lens
0279



gloss black
brown lens
0262

HEADWEAR



New Era 59FIFTY X LiP
grey-orange



New Era 59FIFTY X LiP
black



LiP SNAPBACK
black-silver
1412



LiP TRUCKER CAP
black-silver
1429



LiP BEANIE
grey-red
1436





PACKAGING





TABLE DISPLAY



LOCKABLE TABLE DISPLAY

HEIGHT 66.5CM
WIDTH 40CM
DEPTH 30CM
12 PCS



TABLE DISPLAY

HEIGHT 58CM
WIDTH 20CM
6 PCS

LOCKABLE TABLE DISPLAY

HEIGHT 50CM
WIDTH 22CM
DEPTH 28CM
6 PCS



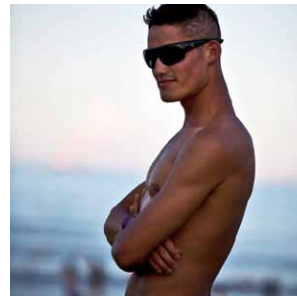


FLOOR DISPLAY



HEIGHT 175CM
WIDTH 50CM
DEPTH 50CM







LiP Sunglasses Co., Ltd.

www.lip-sunglasses.com

Service@lip-sunglasses.com



LiP Sunglasses



[lip_sunglasses](https://www.instagram.com/lip_sunglasses)